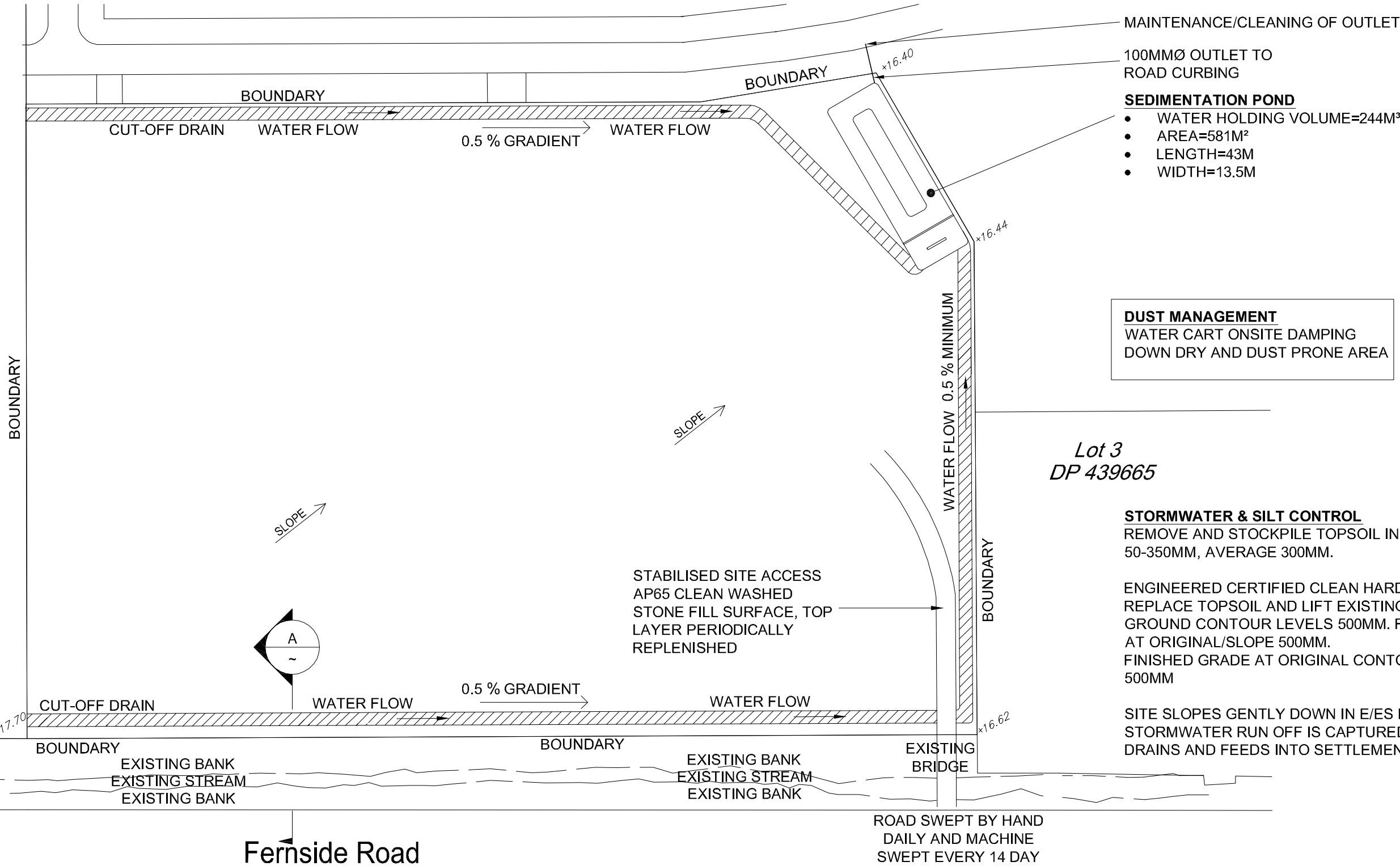


Lot 3
DP 439665



MAINTENANCE/CLEANING OF OUTLET
100MMØ OUTLET TO ROAD CURBING
SEDIMENTATION POND
• WATER HOLDING VOLUME=244M³
• AREA=581M²
• LENGTH=43M
• WIDTH=13.5M

DUST MANAGEMENT
WATER CART ONSITE DAMPING
DOWN DRY AND DUST PRONE AREA

Lot 3
DP 439665

STORMWATER & SILT CONTROL
REMOVE AND STOCKPILE TOPSOIL IN STAGES. DEPTH 50-350MM, AVERAGE 300MM.

ENGINEERED CERTIFIED CLEAN HARDFILL PLACED TO REPLACE TOPSOIL AND LIFT EXISTING NATURAL GROUND CONTOUR LEVELS 500MM. FINISHED GRADE AT ORIGINAL/SLOPE 500MM.
FINISHED GRADE AT ORIGINAL CONTOUR/SLOPE PLUS 500MM

SITE SLOPES GENTLY DOWN IN E/ES DIRECTION. ALL STORMWATER RUN OFF IS CAPTURED BY CUTOFF DRAINS AND FEEDS INTO SETTLEMENT PONDS.

0 INITIAL ISSUE	CM	23.10.12	Surveyed	-	-
			Designed	CM	18.10.12
			Drawn	JK	23.10.12
			Reviewed	CM	23.10.12
			Approved	CAMERON MARS	23.10.12



Client

Project Title
STORMWATER MANAGEMENT

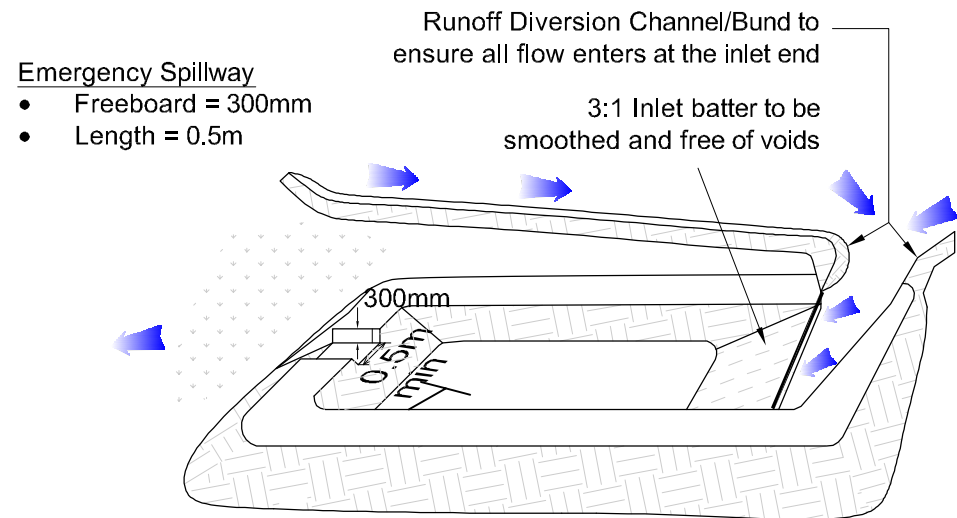
Sheet Title
EROSION SEDIMENT CONTROL PLAN

Scale (A3 Original) 1:1000

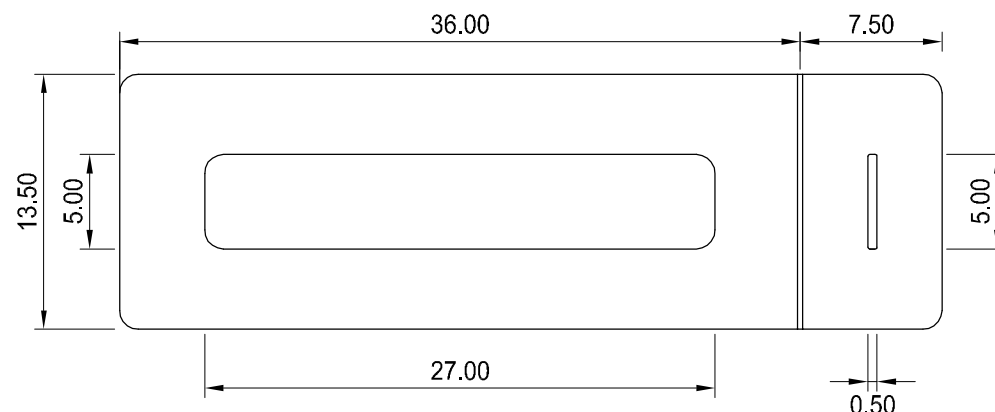
Project No	Sheet	Revision
705197	130	0

Verify all dimensions on site before commencing work. Prior to the figured dimensions over scaling. Refer all discrepancies to Spiire. This document and the copyright in this document remain the property of Spiire New Zealand Ltd. The contents of this document may not be reproduced either in whole or in part by any means whatsoever without the prior written consent of Spiire New Zealand Ltd.

Level 1, 55 Shands Road
Christchurch 8011
spiire.co.nz
+64 3 374 6515



POND OVERVIEW
(Adapted from ESCG Fig 7.7)



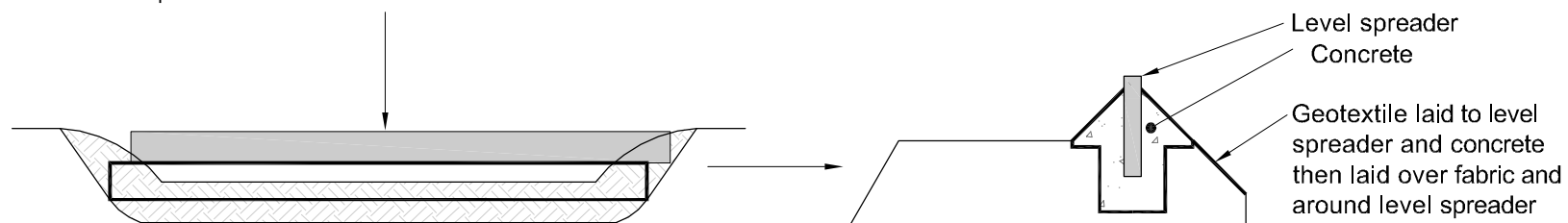
POND DETAILS : PLAN

GENERAL POND DETAIL

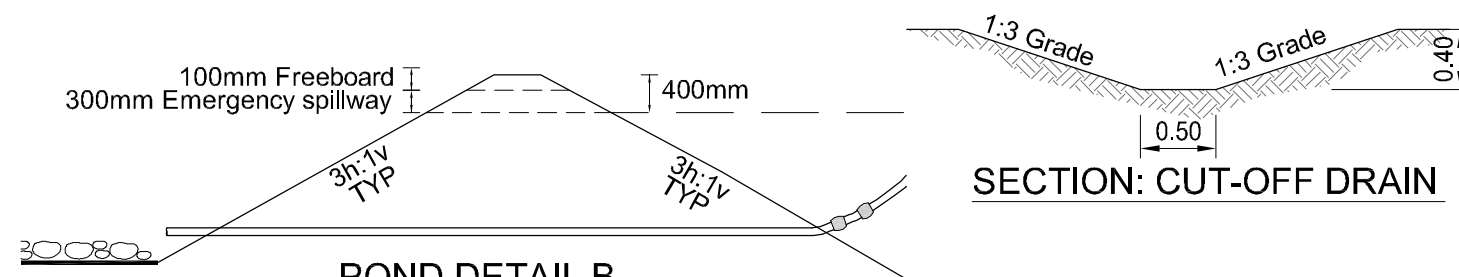
Catchment	3.25 ha
Inside pond slopes	3h:1v
Live storage	171m ³
Dead storage	73m ³
Design water depth	1.0m
No's of decants	1
Holes/decant	88
Freeboard	0.4m

1. Remove all organic soil, use approved fill only and ensure thorough compaction.
2. Clean pond out when 20% full of sediment

LEVEL SPREADER
Install a 150 x 50mm plank on its edge to act as a level spreader - see adjacent detail. It is used to spread flows the width of the pond. This is to be the width of the pond. It must be level & secure well with concrete. Take care with the compaction of this area as level spreaders can be difficult to 're-level' once concrete has been laid.

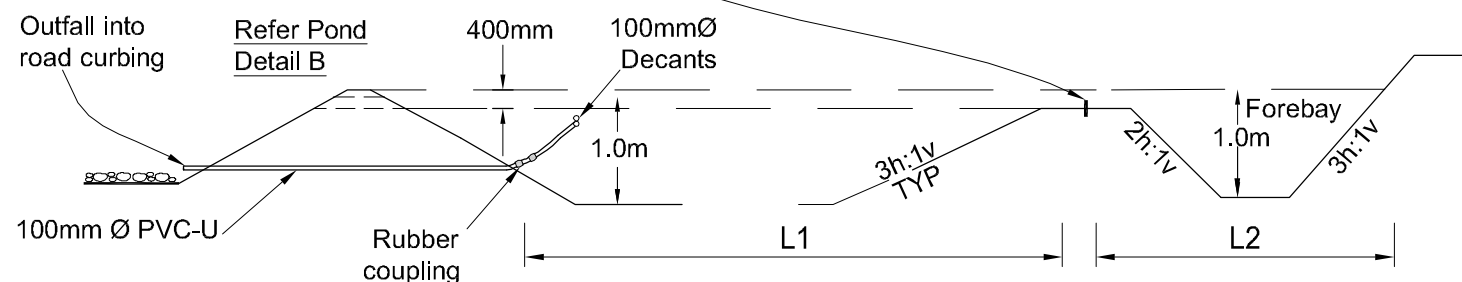


LEVEL SPREADER

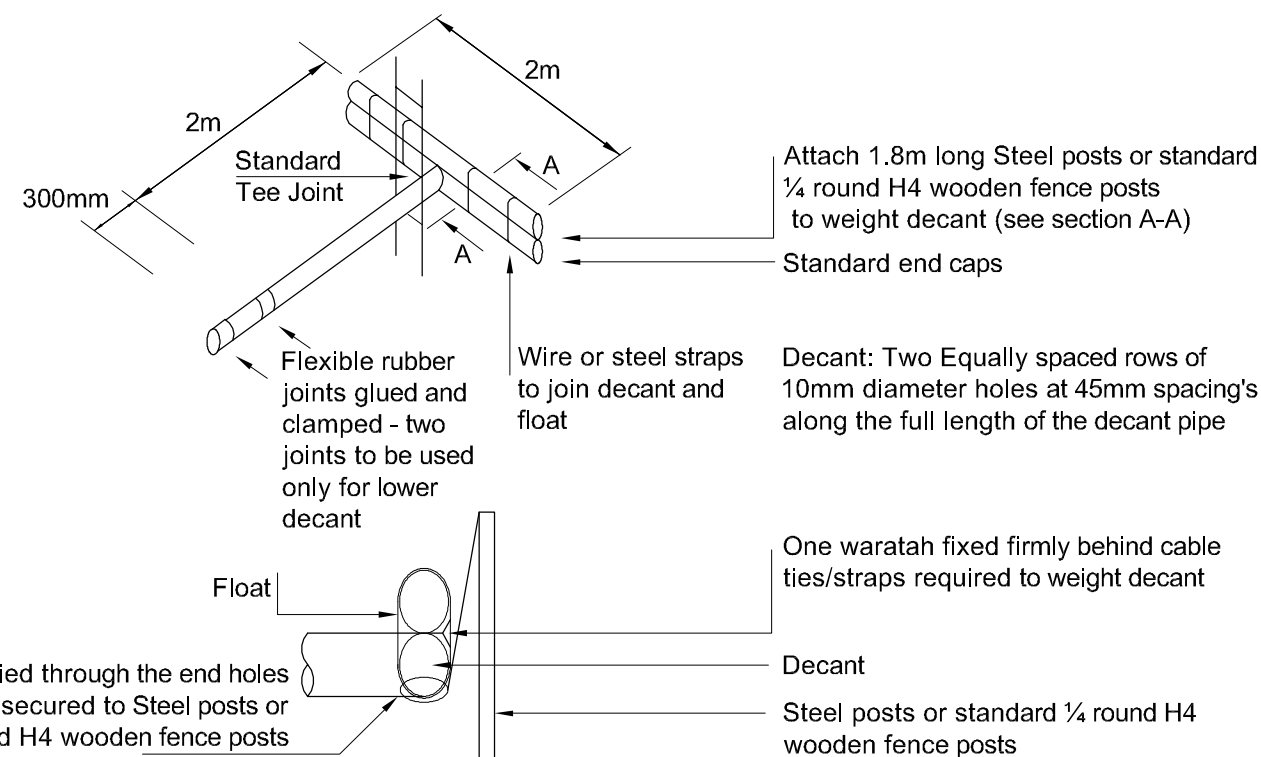


POND DETAIL B

SECTION: CUT-OFF DRAIN



POND DETAILS : CROSS SECTION



SECTION A-A

0 INITIAL ISSUE	CM	23.10.12	Reviewed	CM	23.10.12
Revision	App	Date	Approved	CAMERON MARS	23.10.12

Verify all dimensions on site before commencing work. Prioritise figured dimensions over scaling. Refer all discrepancies to Spiire. This document and the copyright in this document remain the property of Spiire New Zealand Ltd. The contents of this document may not be reproduced either in whole or in part by any means whatsoever without the prior written consent of Spiire New Zealand Ltd.

spiire

Level 1, 55 Shards Road
Christchurch 8011

spiire.co.nz
+64 3 374 6616

Client

Project Title
**STORMWATER
MANAGEMENT**

Sheet Title
**SEDIMENT RETENTION
BASIN DETAILS**

Scale (A3 Original)		
SCALE AS NOTED		
Project No	Sheet	Revision
705197	131	0